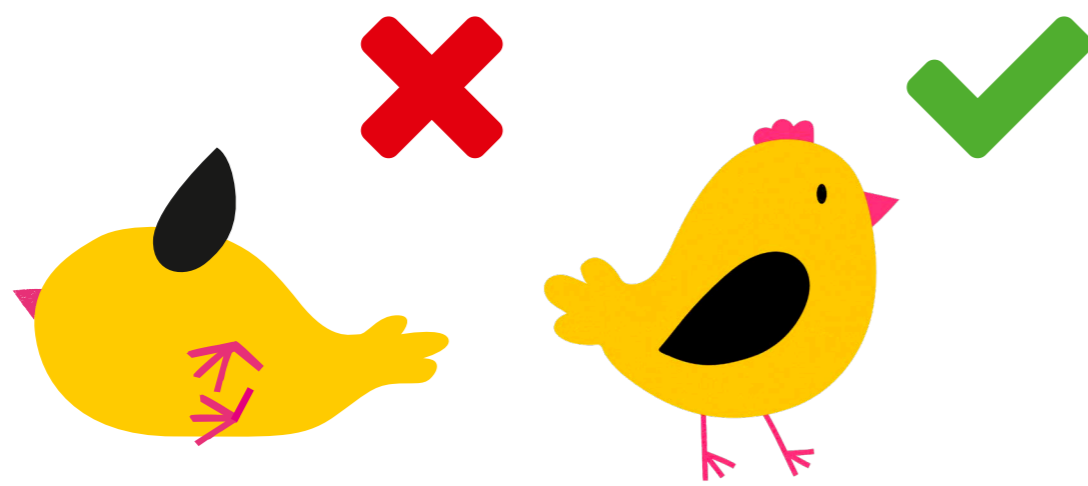


The 7 respeggt rules

Requirements for hatcheries



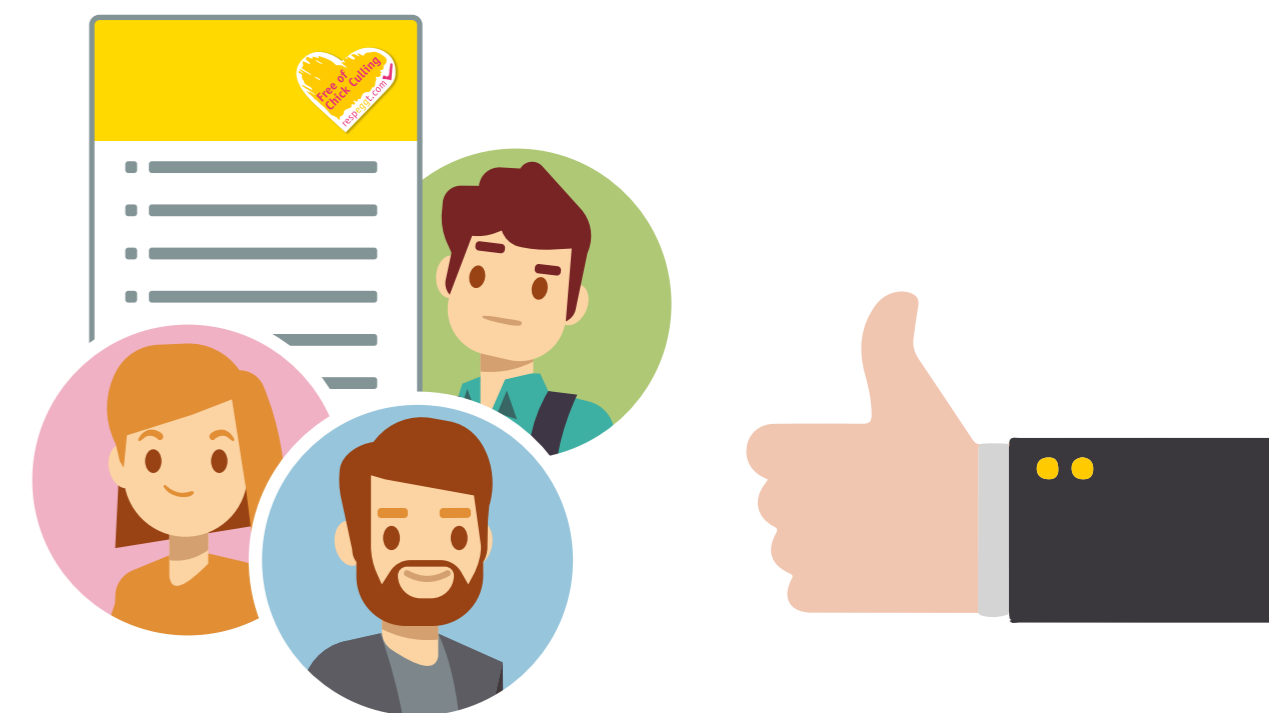
1



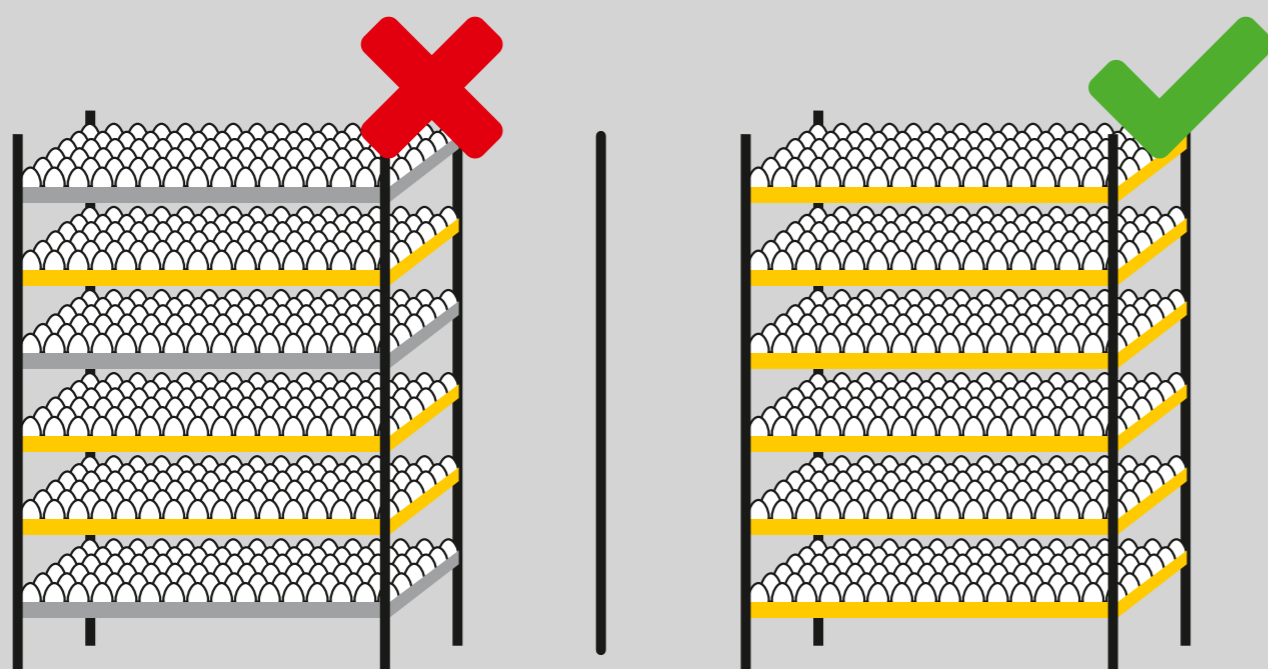
No male chicks may be killed during rearing.

2

All employees must know and follow the respeggt rules for the handling of respeggt hatching eggs and respeggt chicks.



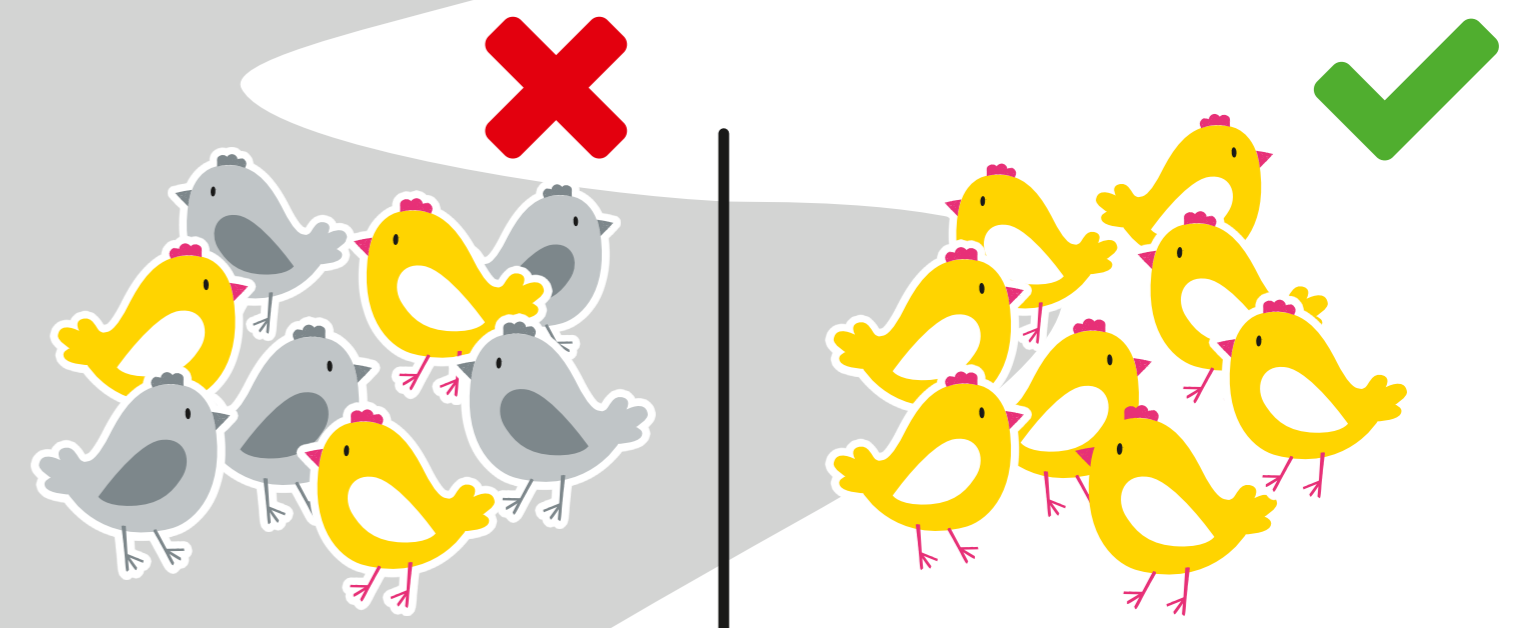
3



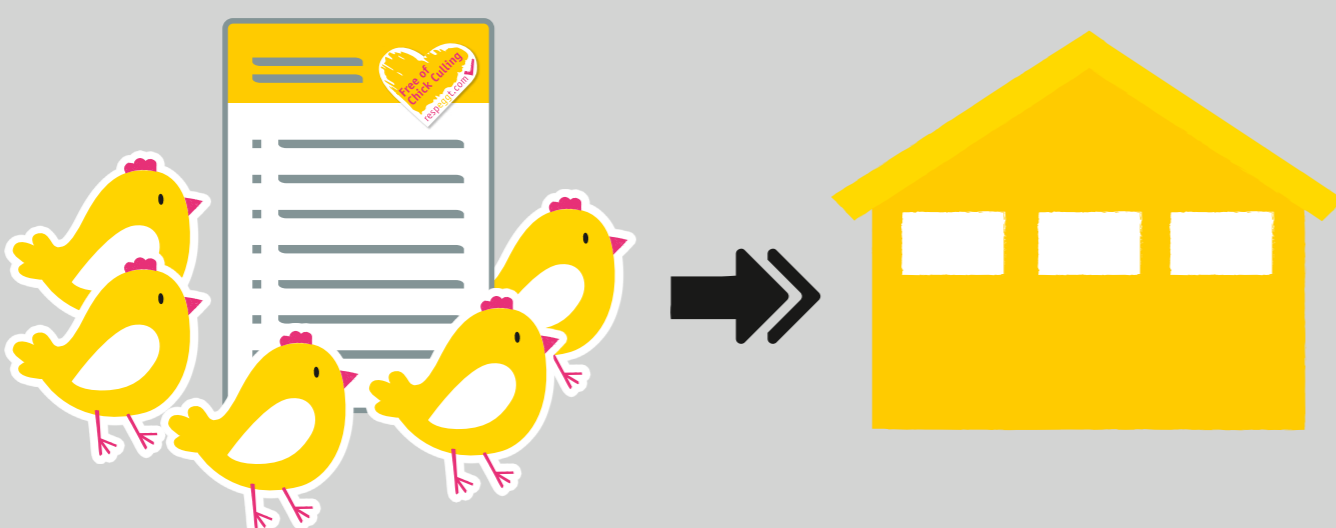
The respeggt hatching eggs must **never** be mixed with conventional hatching eggs.

4

The hatched respeggt chicks must **always** be examined, vaccinated, housed and transported **separately** from conventional chicks.



5



The **respeggt flock passport** must be delivered together with the respeggt chicks to the downstream rearing farms.

6

All relevant documentation, such as delivery notes, transport documents and invoices, must always be marked with the reference **respeggt FoCC** (Free of Chick Culling) or with the respeggt document stamp.



7



Employees of **respeggt group** may visit the hatchery at any time.